

# RELAYS & CONTACTORS

## RELAY IN A BOX LATCHING RELAY SERIES RIBL LATCHING SERIES

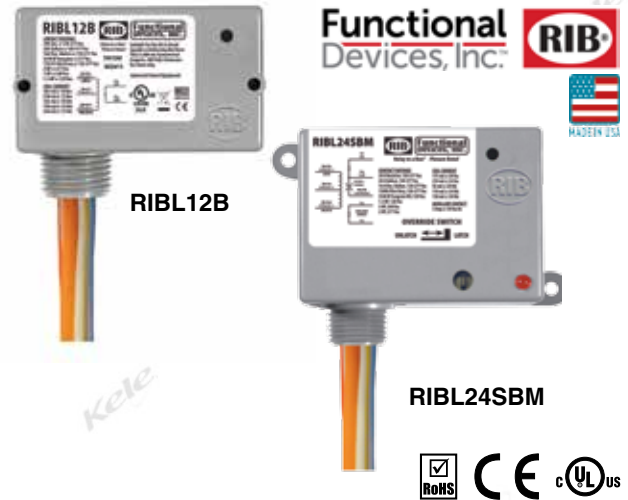


### DESCRIPTION

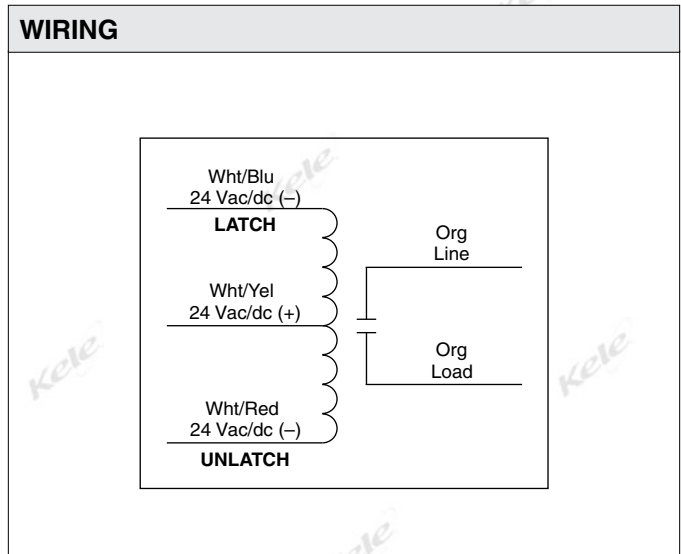
The **RIBL Latching Series** relays from Functional Devices are activated by pulse commands from a controller. The relay contacts are mechanically latched in the closed position and the load will remain on in the event of a control panel failure period. If power is completely lost the contacts will remain in their last state and the load will activate upon the return of normal power or emergency power.

### FEATURES

- **NEMA 1 Plastic enclosure**
- **UL Listed**
- **Energy efficient (no coil draw when relay is active)**
- **Optional override switch**
- **Optional status LED**
- **Optional auxiliary contacts for status control**



| SPECIFICATIONS               |   |
|------------------------------|---|
| <b>Operate Time</b>          | 50 ms   |
| <b>Pulse Length</b>          | 30 seconds (maximum)                          |
| <b>Frequency</b>             | 50/60 Hz                                      |
| <b>Wire Type</b>             | 16" (46 cm) 600 v                             |
| <b>Life Rating</b>           | 1 million cycles minimum mechanical           |
| <b>Operating Temperature</b> | -30° to 140°F (-34° to 60°C)                  |
| <b>Operating Humidity</b>    | 5 to 95% RH non-condensing                    |
| <b>Housing Type</b>          | NEMA 1, plenum rated                          |
| <b>Conduit Hub</b>           | 0.5" NPT nipple                               |
| <b>Dimensions B, SB</b>      | 1.7" x 2.8" x 1.5"<br>(4.32 x 7.11 x 3.81 cm) |
| <b>BM, SBM</b>               | 2.3" x 3.2" x 1.8"<br>(5.84 x 8.13 x 4.57 cm) |
| <b>Approvals</b>             | UL listed, UL508, C-UL, CE, RoHS              |
| <b>Warranty</b>              | 1 year  |



| ORDERING INFORMATION |              |  |  |  |   |   |
|----------------------|--------------|--|--|--|---|---|
| Model                | Coil Voltage | Coil Current   | Latch / Unlatch Voltage                        | Contact Arrangement                      | Contact Rating  | LED Indication                            |
| RIBL12B              | 12 VAC / DC  | 182mA @ 10 VAC,<br>250mA @ 12 VAC,<br>165mA @ 10VDC,<br>198mA @ 12 VDC,<br>250mA @ 15VDC | Latch / Unlatch:<br>10 VDC / 11<br>VAC Minimum | One SPST<br>latching relay,<br>dual coil | 20A resistive @ 120-<br>277 VAC, 20A ballast<br>@ 120-277 VAC, 16A<br>electronic ballast @<br>120-277 VAC, 5540 W<br>tungsten @ 277 VAC,<br>720 VA @ 120-277<br>VAC, 2 hp @ 277 VAC,<br>3 hp @ 240 VAC, 1.5<br>hp @ 120 VAC | None                                      |
| RIBL12BM             |              |  |  |  |   | ON = Voltage detected<br>(contact closed) |
| RIBL12SB             |              |  |  |  |   | None                                      |
| RIBL12SBM            |              |  |  |  |   | ON = Voltage detected<br>(contact closed) |
| RIBL24B              | 24 VAC / DC  | 175mA @ 20 VAC,<br>210mA @ 24 VAC,<br>92mA @ 20VDC,<br>110mA @ 24 VDC,<br>138mA @ 30 VDC | Latch / Unlatch:<br>20 VDC / 22<br>VAC Minimum |  |   | None                                      |
| RIBL24BM             |              |  |  |  |   | ON = Voltage detected<br>(contact closed) |
| RIBL24SB             |              |  |  |  |   | None                                      |
| RIBL24SBM            |              |  |  |  |   | ON = Voltage detected<br>(contact closed) |

RELAYS & CONTACTORS

18